

EXTREMELY LIMITED  
SPACE REMAINING

# BIRMINGHAM HEALTH INNOVATION CAMPUS

Extremely limited space remaining at the region's leading life science ecosystem

CONTAINMENT LEVEL OR OFFICE USE



Birmingham Health  
Innovation Campus

A partnership between



UNIVERSITY OF  
BIRMINGHAM

bruntwood  
SciTech



# BIRMINGHAM HEALTH INNOVATION CAMPUS



A partnership between



**Birmingham Health Innovation Campus (BHIC) is the region's leading campus for life sciences, colocated alongside the University of Birmingham and Queen Elizabeth Hospital in Selly Oak, Birmingham.**

Delivered through a long term partnership between Bruntwood SciTech and the University of Birmingham, it's ideal for scale ups and global companies specialising in medtech, precision medicine, genomics, medical devices, trauma medicine and more.

The first in a six phase masterplan, No.1 BHIC is set to complete later this year, totalling 133,000 sq ft of innovative, Grade A space. The state of the art facility will also be home to the Precision Health Technologies Accelerator (PHTA). Based on the upper three floors, the PHTA will offer colocated companies within BHIC direct access to both the Clinical Immunology Service and the Industry Trials Hub to accelerate the use of the drugs and devices into clinical practice.



## PRECISION HEALTH TECHNOLOGIES ACCELERATOR

Occupying 65,000 sq ft of No.1 BHIC, the Precision Health Technologies Accelerator (PHTA) is the University of Birmingham's flagship health and life sciences research facility. Home to the Clinical Immunology Service, Industry Trials Hub and medtech Makerspace, PHTA provides custom-built incubation spaces where businesses can engage with academics and clinicians and translate their innovations to the clinic.



### PHTA- ANCHOR TENANTS



#### Clinical Immunology Service

The University of Birmingham's Clinical Immunology Service (CIS) provides a comprehensive range of accredited lab services to facilitate NHS diagnostic testing, clinical trials, and the development of new diagnostics and is the only service of its kind to be embedded within an academic environment.



#### Industry Trials Hub

PHTA's Industry Trials Hub (ITH) introduces a new way for industry to partner with the University of Birmingham's UKCRC-accredited clinical trials units; a collaborative approach accelerating innovation from trials to clinical implementation.

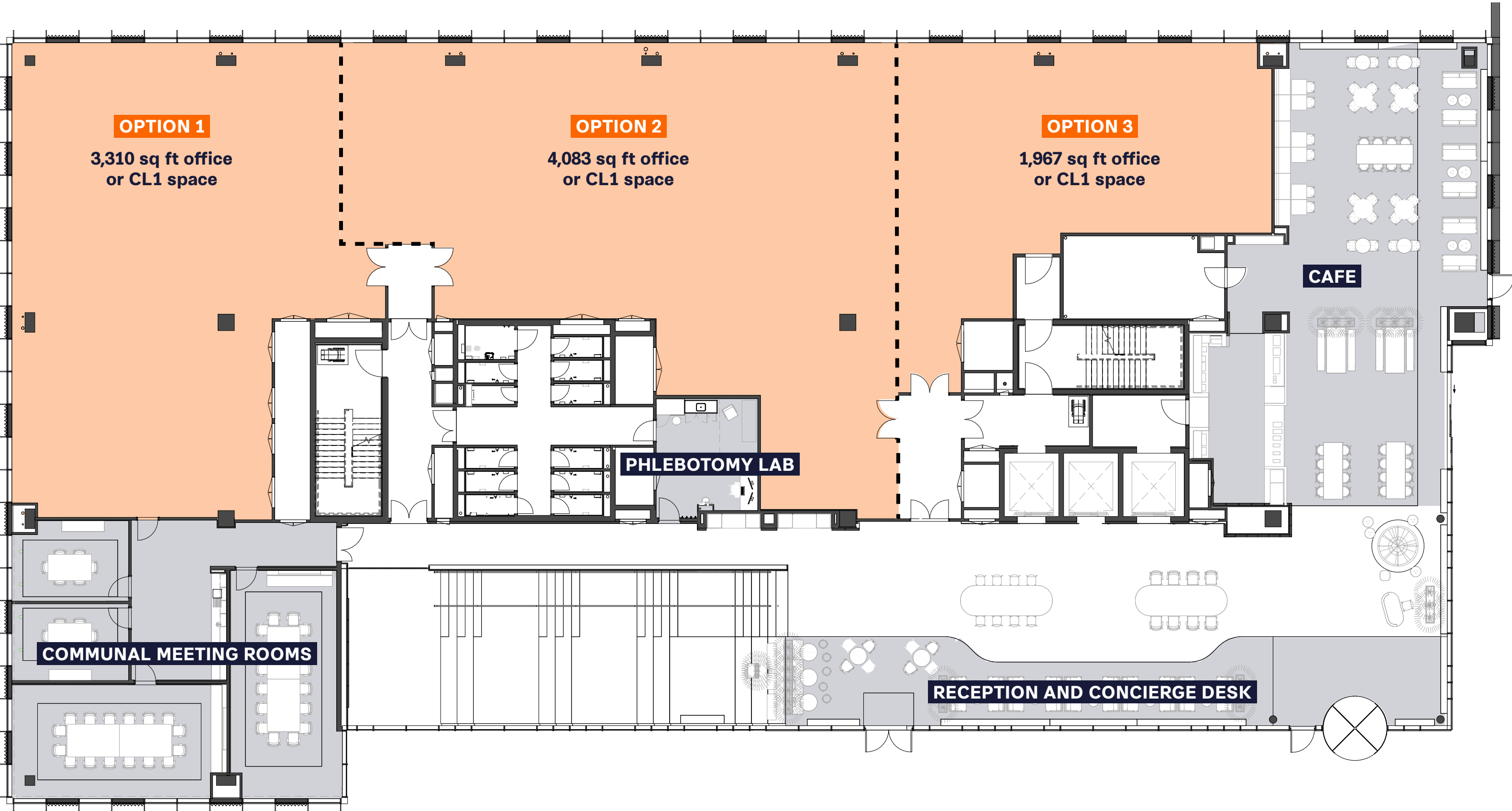
By collaborating with the PHTA, industry partners will work together with the specialist trial management teams to develop the trial – answering research questions in areas of unmet medical need and generating data that can contribute to the licencing of a drug or regulatory approval of a device.

This new approach, termed 'Fit For Filing', is set to accelerate the use of drugs and devices into clinical practice and offers a major benefit to colocated companies.



## REMAINING AVAILABILITY:

Below denotes how a possible split might look, although this is for indicative purposes and there is scope to explore different options.



Up to 9,439 sq ft is available in No.1 BHIC, which is available as a single demise, or can be split as indicated.

| FLOOR        | AVAILABILITY   |
|--------------|----------------|
| Five         | PRELET TO PHTA |
| Four         | PRELET TO PHTA |
| Three        | PRELET TO PHTA |
| Two          | UNDER OFFER    |
| One          | UNDER OFFER    |
| Ground       | 9,439 SQ FT    |
| Lower Ground | UNDER OFFER    |



No.1 BHIC: Ground floor plan





Typical Office Floor

# BIRMINGHAM HEALTH INNOVATION CAMPUS



The Café



CL1 Laboratory Space



# BIRMINGHAM

## HEALTH INNOVATION CAMPUS



A partnership between



**bruntwood**  
SciTech

## SUSTAINABILITY

In 2018, Bruntwood SciTech became the first property company in the UK to sign up to the UKGBC Net Zero Carbon commitment, pledging to operate at net zero carbon in all areas under our direct control - our common parts, our own offices, and our vehicle fleet - by 2030.

**IN KEEPING WITH THIS COMMITMENT,  
BIRMINGHAM HEALTH INNOVATION CAMPUS WILL BE  
EPC A RATED AND BREEAM 'EXCELLENT'**



SPECIFICATION

|                                                                                |                                                                                |                                                                                 |                                                                                                                                                                |
|--------------------------------------------------------------------------------|--------------------------------------------------------------------------------|---------------------------------------------------------------------------------|----------------------------------------------------------------------------------------------------------------------------------------------------------------|
| <div><div><div></div></div><div>EPC 'A' Rating</div></div>                     | <div><div><div></div></div><div>Lab infrastructure<br/>available</div></div>   | <div><div><div></div></div><div>Campus meeting<br/>rooms</div></div>            | <div><div><div></div></div><div>Floor to ceiling<br/>windows</div></div>                                                                                       |
| <div><div><div></div></div><div>On campus parking</div></div>                  | <div><div><div></div></div><div>Secure cycle storage</div></div>               | <div><div><div></div></div><div>Showers and<br/>changing facilities</div></div> | <div><div><div></div></div><div>3.4m floor to ceiling height<br/>upper floor offices with an<br/>exposed pre-cast concrete<br/>soffit and services</div></div> |
| <div><div><div></div></div><div>Energy efficient lighting</div></div>          | <div><div><div></div></div><div>Event space</div></div>                        | <div><div><div></div></div><div>24 hour fob access</div></div>                  | <div><div><div></div></div><div>7.5m double height<br/>reception area</div></div>                                                                              |
| <div><div><div></div></div><div>Extensive external<br/>landscaping</div></div> | <div><div><div></div></div><div>Dedicated loading<br/>access areas</div></div> | <div><div><div></div></div><div>Campus café</div></div>                         | <div><div><div></div></div><div>Office suites available<br/>from 2,500 sq ft</div></div>                                                                       |



# BIRMINGHAM HEALTH INNOVATION CAMPUS

## THE LIFE SCIENCE EOCSYSTEM



A partnership between



UNIVERSITY OF  
BIRMINGHAM

bruntwood  
SciTech

### Key Locations

1. Birmingham Health Innovation Campus
2. The Barberry – National Centre for Mental Health
3. Centre for Translational Inflammation Research
4. Queen Elizabeth Hospital Birmingham
5. Birmingham Women’s Hospital
6. The Harborne Hospital, HCA UK
7. Centre for Clinical Haematology
8. NIHR Liver Biomedical Research Unit
9. Advanced Therapies Facility and Human Biomaterials Resource Centre
10. Institute of Transitional Medicine
11. NIHR/Wellcome Trust Birmingham Clinical Research Facility
12. NIHR University Hospitals Birmingham HealthTech Research Centre
13. NIHR Experimental Cancer Medicine Centre
14. Centre for Rare Diseases
15. University of Birmingham Medical School
16. NIHR Birmingham Biomedical Research Centre
17. CRUK Clinical Trials Unit
18. Birmingham University Imaging Centre
19. Henry Wellcome Building for Biomolecular NMR Spectroscopy
20. NHS Blood and Transplant Services
21. BioHub Birmingham (Research Park)
22. Centre for Regulatory Science and Innovation
23. Birmingham Clinical Trials Unit
24. University of Birmingham School of Chemical & Mechanical Engineering Buildings
25. Centre for Computational Biology
26. Birmingham City Centre
27. Birmingham Dental Hospital and School of Dentistry
28. Centre for Human Brain Health
29. Health Services Management Centre
30. Birmingham Children’s Hospital



# BIRMINGHAM

## HEALTH INNOVATION CAMPUS



Birmingham Health  
Innovation Campus

A partnership between



UNIVERSITY OF  
BIRMINGHAM

bruntwood  
SciTech

SELLY OAK  
TRAIN STATION



SELLY OAK  
SHOPPING PARK

THE BUILDING



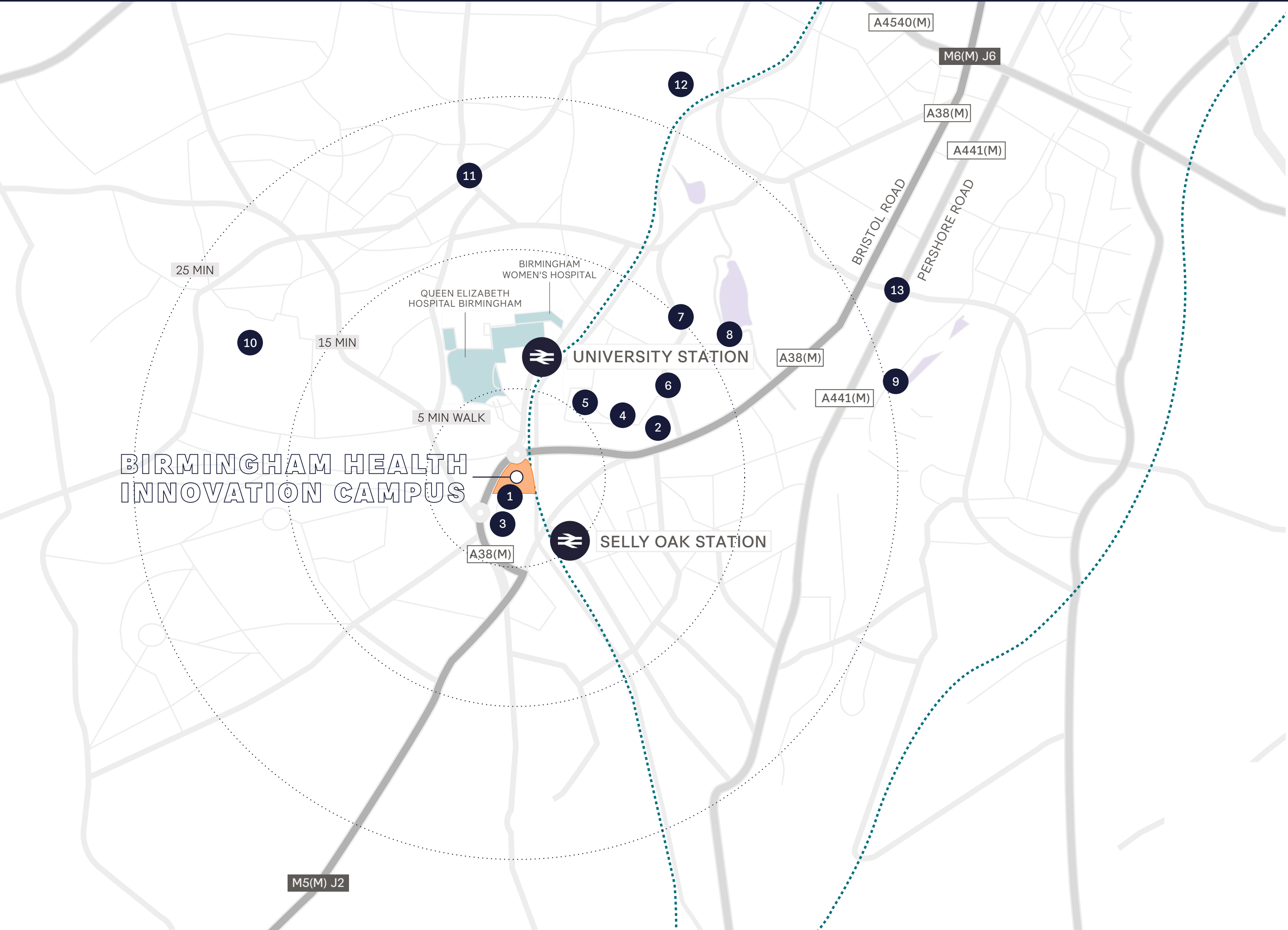


# BIRMINGHAM

## HEALTH INNOVATION CAMPUS



A partnership between



## SURROUNDING AMENITIES

- 1 Selly Oak Shopping Park, including McDonald's, Starbucks, Marks and Spencer Food and Sainsbury's
- 2 UoB Sport & Fitness
- 3 The Gym Group
- 4 University of Birmingham Campus
- 5 Lapworth Museum of Geology
- 6 Barber Institute of Fine Arts
- 7 Edgbaston Park Hotel, Restaurant and Conference Centre
- 8 Winterbourne House and Garden
- 9 Midlands Arts Centre and Cannon Hill Park
- 10 Harborne Golf Club
- 11 Harborne High Street
- 12 Birmingham Botanical Gardens
- 13 Edgbaston Cricket Stadium



# GET IN TOUCH

Aston Webb Boulevard  
Selly Oak  
Birmingham  
B29 6SJ



**Jamie Bottomley**

jamie.bottomley@trackrealestate.co.uk  
07788 975 465



**Theo Holmes**

theo.holmes@cbre.com  
07967 802 656






**Ben Thacker**

ben.thacker@savills.com  
07917 218 244

**Michelle Mills**

michelle.mills@cbre.com  
07733 314 585

 Bruntwood SciTech  
 @BW\_SciTech  
 @bruntwoodscitech