



BIRMINGHAM HEALTH INNOVATION CAMPUS



Birmingham Health
Innovation Campus

A partnership between



UNIVERSITY OF
BIRMINGHAM

bruntwood
SciTech



BIRMINGHAM HEALTH INNOVATION CAMPUS

- 

New life science campus for the West Midlands, delivered in partnership with University of Birmingham
- 

Delivering 657,000 sq ft. of state of the art lab, office and incubation space by 2031
- 

£210m, 10-year masterplan currently being developed
- 

Part of a fully connected healthcare system
- 

Phase 1 includes a 133,000 sq ft. purpose-built, six-storey building designed for precision health, medtech and digital health businesses
- 

Lab and office space purpose-built for companies working in medtech, precision medicine, diagnostics and digital healthcare
- 

50% pre-let to the University's Precision Health Technologies Accelerator (PHTA) due to complete in 2023
- 

A designated Life Science Opportunity and High Potential Opportunity for data driven healthcare

133,000

sq ft. of new build office and laboratory space
with associated public realm and 233 car spaces

LONG
TERM

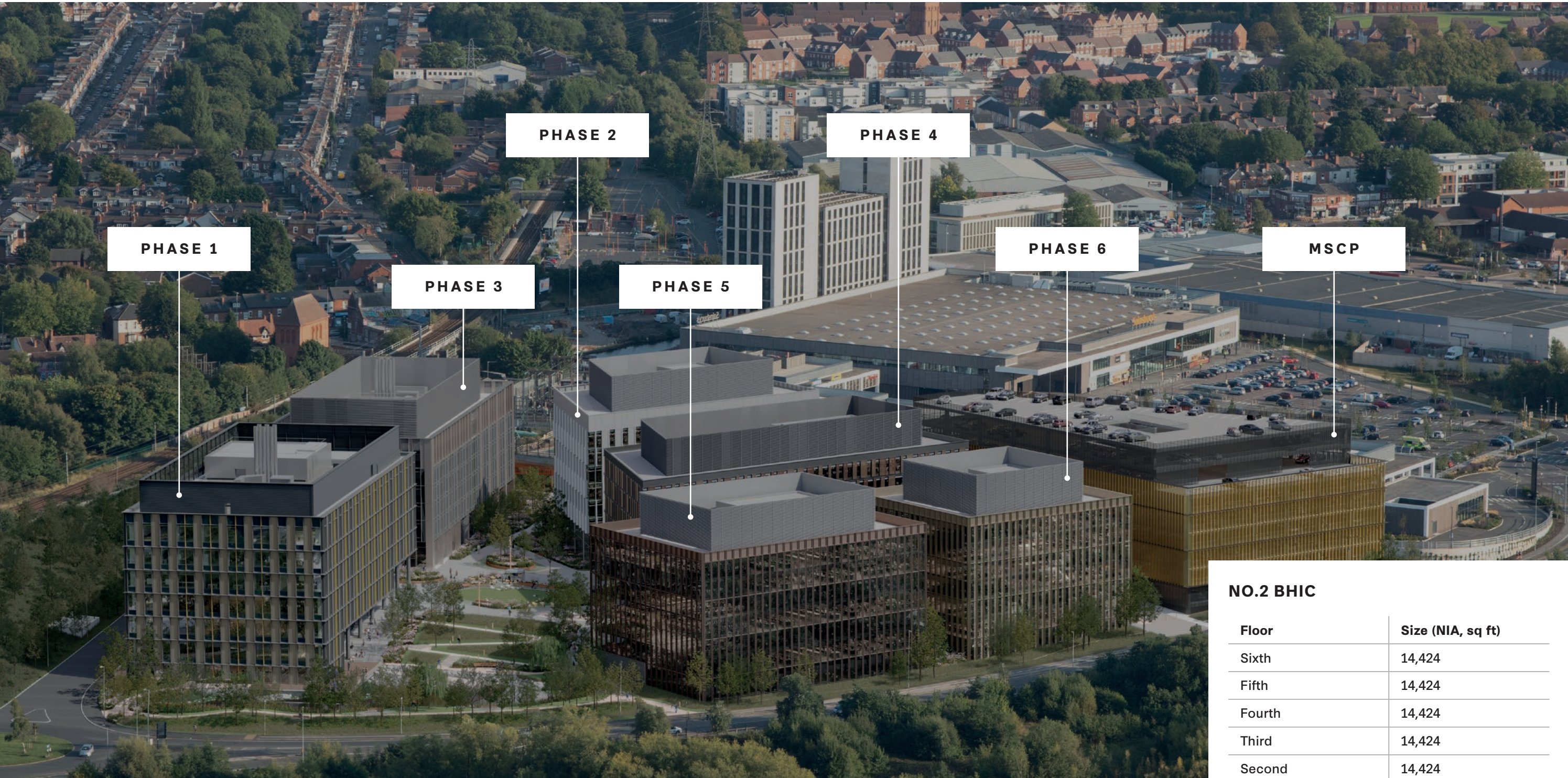
partnership with University of Birmingham,
closely aligned to Birmingham Health Partners

SUMMER
2024

practical completion date



BHIC MASTERPLAN - FUTURE PHASES



NO.2 BHIC

| Floor | Size (NIA, sq ft) |
|--------------|-------------------|
| Sixth | 14,424 |
| Fifth | 14,424 |
| Fourth | 14,424 |
| Third | 14,424 |
| Second | 14,424 |
| First | 14,424 |
| Ground | 14,424 |
| Lower Ground | 7,642 |
| Total | 108,610 |



10 acre site to deliver 657,000 sq ft as part of a ten year masterplan



Long term partnership with University of Birmingham, closely aligned to Birmingham Health Partners



Development in 6 phases (Phase 1 in Summer 2024; Total site completion 2031)



22

23

24

25



BIRMINGHAM HEALTH
INNOVATION CAMPUS

KEY LOCATIONS

- 1. Birmingham Health Innovation Campus
- 2. The Barberry – National Centre for Mental Health
- 3. Centre for Translational Inflammation Research
- 4. NIHR/Wellcome Trust Birmingham Clinical Research Facility
- 5. Centre for Clinical Haematology
- 6. NIHR Liver Biomedical Research Unit
- 7. Advanced Therapies Facility and Human Biomaterials Resource Centre
- 8. Institute of Transitional Medicine
- 9. NIHR Surgical Reconstruction and Microbiology Research Centre
- 10. NIHR Trauma Management Healthcare Technology Co-operation
- 11. Centre for Rare Diseases
- 12. NIHR Experimental Cancer Medicine Centre
- 13. NIHR Biomedical Research Centre in Inflammatory Diseases
- 14. CRUK Clinical Trials Unit
- 15. University of Birmingham Medical School
- 16. Birmingham University Imaging Centre
- 17. NHS Blood and Transplant Services
- 18. Biohub Birmingham (Research Park)
- 19. Birmingham Clinical Trials Unit
- 20. University of Birmingham Schools of Chemical & Mechanical Engineering Buildings
- 21. Centre for Computational Biology
- 22. Birmingham Dental Hospital and School of Dentistry
- 23. Centre for Human Brain Health
- 24. Health Services Management Centre
- 25. Henry Wellcome Nuclear Magnetic Resonance Facility

A UNIQUE OPPORTUNITY TO PAVE THE WAY

RANKED 6TH

in the UK for research power in Clinical Sciences:
Research Excellence Framework 2021



Excellence in Medical & Health Research

- | | | | |
|--|----------------------------|--|--------------------------------|
| | Inflammation & Ageing | | Dentistry |
| | Cancer & Genomics | | Clinical Sciences |
| | Microbiology & Infection | | Applied & Global Health |
| | Cardiovascular Science | | Maternal, Metabolism & Systems |
| | Immunology & Immunotherapy | | Mental Health & Wellbeing |



Connected with outstanding NHS partners

UHBFT is the UK's
LARGEST
largest NHS Trust



- | | |
|--|---|
| | Flagship QEHB "super-hospital" |
| | Treating more than 2.2m patients per year |
| | Employing over 20,000 staff |
| | Over 2,700 bed across its sites |
| | turnover of £1.6bn per year |

Birmingham Women's and Children's Hospital is the
FIRST
of its kind in the UK

Birmingham Women's and Children's NHS
NHS Foundation Trust

Uniting specialist care for thousands of women, children and families in the West Midlands, chaired by Sir Bruce Keogh.



A unified vision for "research that matters" locally, regionally and internationally.

LEVERAGING TRANSLATIONAL INFRASTRUCTURE
TO DELIVER SOLUTIONS, FASTER



£24m co-investment BEIS and BHP
Provides platform for interactions between industry, researchers, clinicians, biostatisticians and trial design experts



Only UK national centre supporting the development and delivery of novel therapeutics and medical devices, through advanced regulatory standards and tools
Partners with MHRA, HRA, FDA, EMA



Largest NIHR Clinical Research Facility
Adult and paediatric experimental medicine facilities
Recruited over 120,000 patients to more than 400 studies



Running > 50% all UK ATMP trials (7% globally)
De-risking pathways for new ATMPs
Deliver efficiencies in manufacture logistics and speed to clinic/trials



Largest Genomics Medicine Centre and Lab Hub in UK
Systems rolled out across 17 regional NHS Trusts
West Midlands & Wessex GLH population of 11m



One of 6 national Substantive Sites running 2 of 7 National Hubs
With Leicester, Nottingham, Warwick
Only Site with NHS core partner (UHB)
Focus on secondary healthcare data



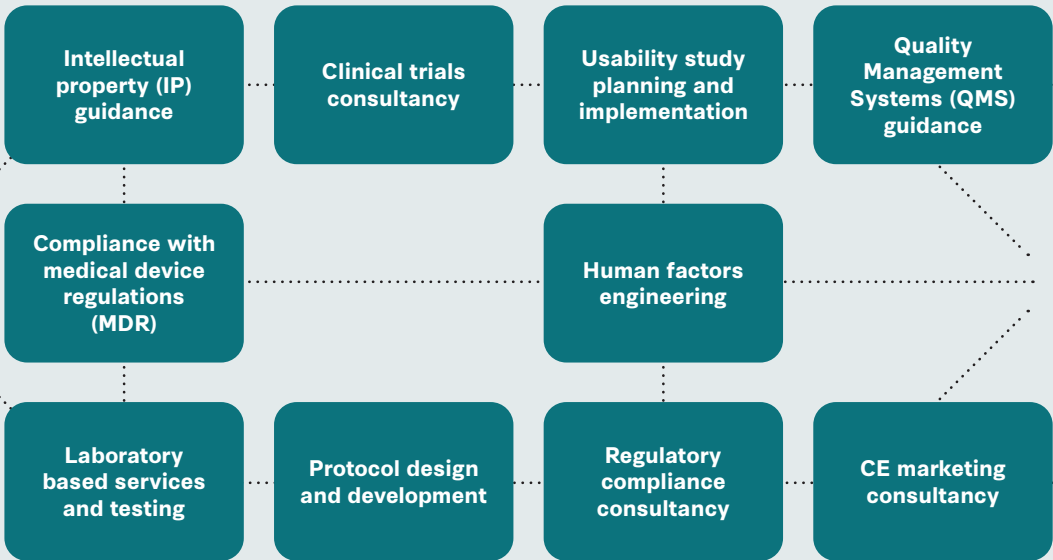
Lead a national partnership working for rapid understanding of COVID-19 disease pathogenesis



National centre for testing and evaluating medical devices



BENCH



MARKET







PRECISION HEALTH TECHNOLOGIES ACCELERATOR

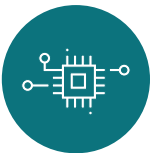
Occupying 65,000 sq ft of the first phase, No.1 BHIC is proud to welcome Precision Health Technologies Accelerator to the Campus. Delivering accelerated, data-enabled precision medicine and healthcare innovation to the patient through two commercialisation and translational hubs.

Healthcare Technologies
Innovation Hub

-  Supporting rapid translation of healthcare tech
-  Providing regulatory support & technology evaluation
-  Incubation space for new and scaling businesses
-  Entrepreneurship and masters training

Birmingham Precision
Medicine Centre

-  Rapid translation of new diagnostics from research to service delivery
-  Novel biomarker development
-  New “Fit for Filing” industry clinical trials hub
-  Developing Healthcare Data platform



Integrated Healthcare
Data Platform

Understand the patient



Birmingham Precision
Medicine Centre

Understanding the disease



MedTech
Innovation Hub

Developing and validating
the technology



PRECISION HEALTH TECHNOLOGIES ACCELERATOR
- ANCHOR TENANTS

Clinical Immunology Service




Professor Alex Richter
Director
CIS



The CIS team offers a unique set of skills with biomedical scientists, clinical scientists and researchers coming together to provide NHS diagnostic testing & innovation in diagnostic development.

CIS will be an anchor tenant at PHTA, occupying custom built lab space providing accredited lab services and research opportunities to support the diagnosis of:

 Autoimmune and neuro-immunological disease

 Primary and secondary immunodeficiency


 Blood cancers


 Infections and allergy


Industry Trials Hub



Pam Kearns
Director
Cancer Research UK Clinical Trials Unit (CRCTU) and Institute of Cancer and Genomics Sciences

 Lead for PHTA Industry Trials Hub

 Offering innovative trial design, management, delivery and data curation of clinical trials

 'Fit for Filing' capability to support pharma, reducing costs and accelerate path to patient



WHY BIRMINGHAM? WHY NOW?

Birmingham is home to global businesses, major R&D facilities, innovative entrepreneurs, renowned universities and one of the youngest populations in Europe. A great place to live, work and play.

Currently, International companies investing in the UK can benefit from a fully-funded package of commercial workspace, market entry and business acceleration support, delivered by Bruntwood SciTech and available at our Innovation Birmingham campus.



Regional economy worth **£105bn**



The most employable graduates in the UK (beating those from Oxford, Cambridge, London and everywhere else)



Less than two hours by train from London, Manchester, Oxford, Nottingham, Liverpool, Leeds and Bristol



90% of the UK's population reachable with a **four hour drive**



An **international airport**



One of the **most diverse regions** in Europe with people from **190 different countries** living here



400 OFSTED 'Outstanding' schools



22 higher education establishments, 63% of which carry the UK's Teaching Excellence 'gold' ranking



8,000 acres of green space and **571 parks**, making it the UK's fourth greenest city



A hub for professional services, and home to the big 4



DIVERSE, STABLE
POPULATION

of almost 6m

17,320 PEOPLE

employed in life sciences
industry across the region

14,935 GRADUATES

in life sciences

11,000 STEM
APPRENTICESHIPS

started in 2019-20

550 COMPANIES

currently involved in the life science sector



£94b REGIONAL
ECONOMY

in life sciences

LARGEST MEDICAL
DEVICES CLUSTER

employed in life sciences
industry across the region

80 HOSPITALS

and specialist care facilities

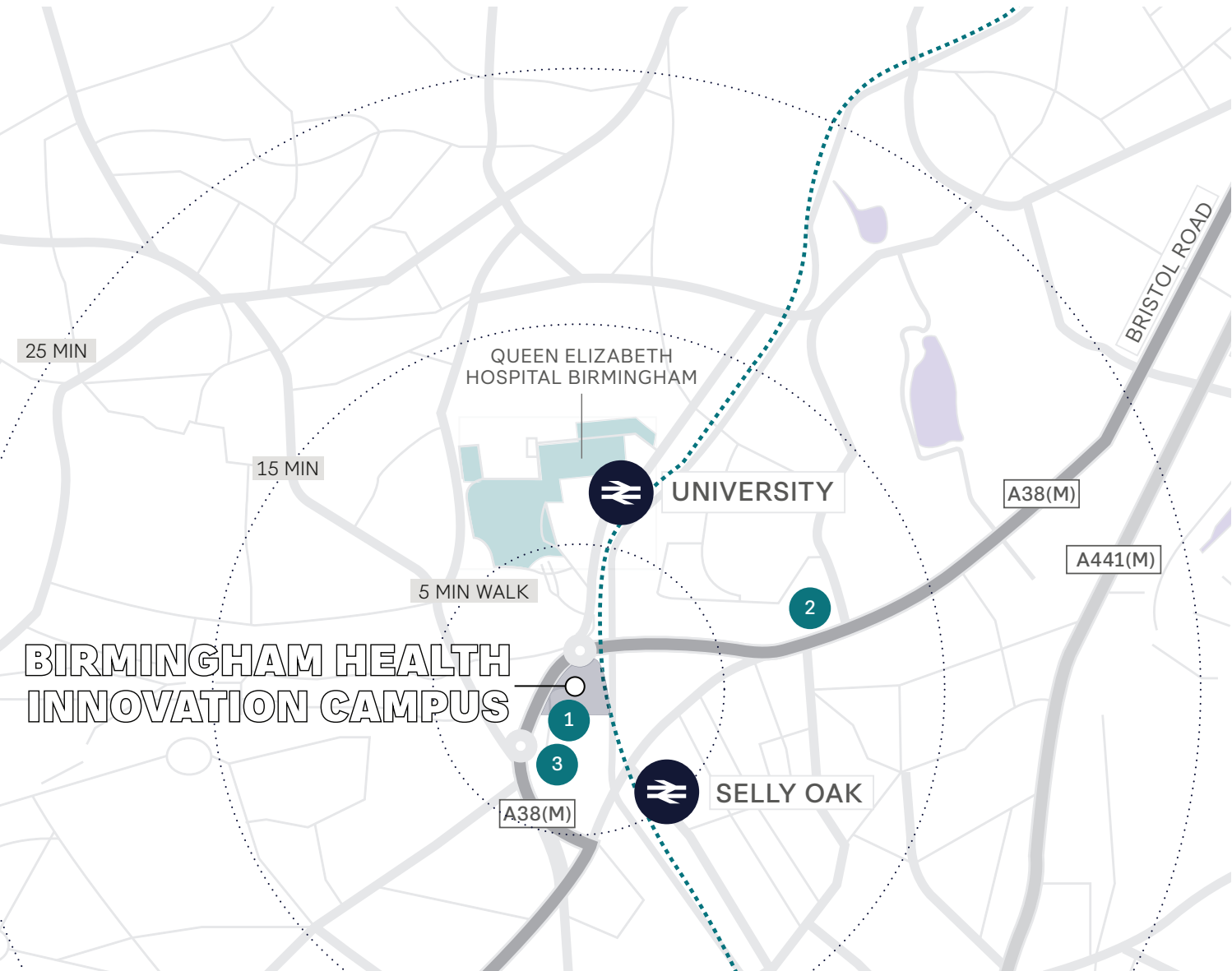
£6.49b REGIONAL
TURNOVER

STEM apprenticeships started in 2019-20

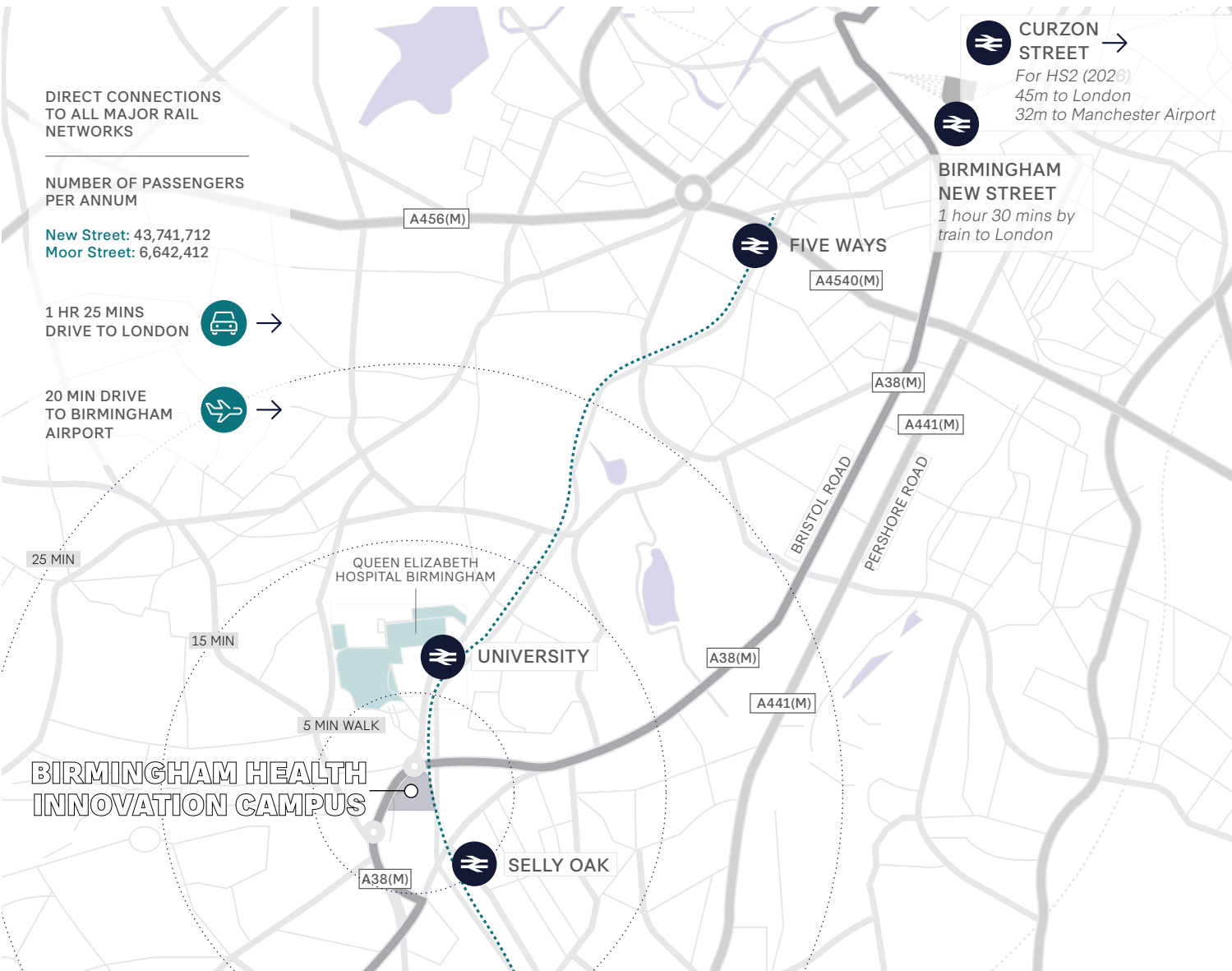
40% INCREASE
SINCE 2005

currently involved in the life science sector

SURROUNDING AMENITIES



GETTING HERE



KEY LOCATIONS

1 Selly Oak Shopping Park

2 UoB Sport & Fitness

Bus routes include:

11A, 20, 41, 46, 55, 61, 63, 76, 882, X21

Four trains per hour from Birmingham New Street to Selly Oak (10 mins journey)

Sainsbury's

GREGGS



M&S
FOODHALL

Carluccio's



COSTA

Nando's

THE LIFESTYLE

Discover excellent schools, wide open spaces
and a vibrant community on the doorstep.



SELLY OAK
TRAIN STATION

SELLY OAK
SHOPPING PARK

THE BUILDING

SPECIFICATION



EPC 'A' Rating



Lab infrastructure available



Campus meeting rooms



Floor to ceiling windows



On campus parking



Secure cycle storage



Showers and changing facilities



3.4m floor to ceiling height upper floor offices with an exposed pre-cast concrete soffit and services



Energy efficient lighting



Event space



24 hour fob access



7.5m double height reception area



Extensive external landscaping



Dedicated loading access areas



Campus café



Office suites from 2,507 sq ft. (233 m²) to 22,119 sq ft. (2,055 m²) floorplates. 60,396 sq ft. total building

NO.1 BIRMINGHAM HEALTH INNOVATION CAMPUS



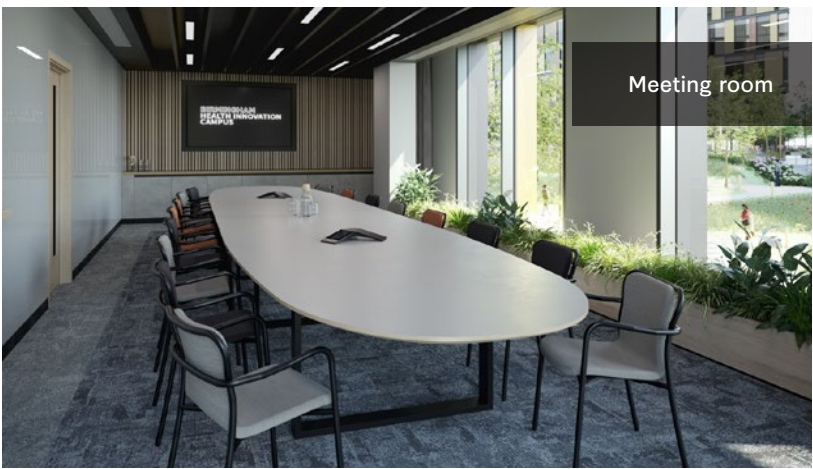
| FLOORPLANS | TOTAL SQ FT |
|---------------------|--|
| Three / Four / Five | Occupied by the University of Birmingham's Precision Health Technologies Accelerator |
| Two | 22,119 |
| One | 21,129 |
| Ground | 9,439 |
| Lower Ground | 7,706 |
| Total Area | 60,396 |



Breakout meeting space



Lab space



Meeting room

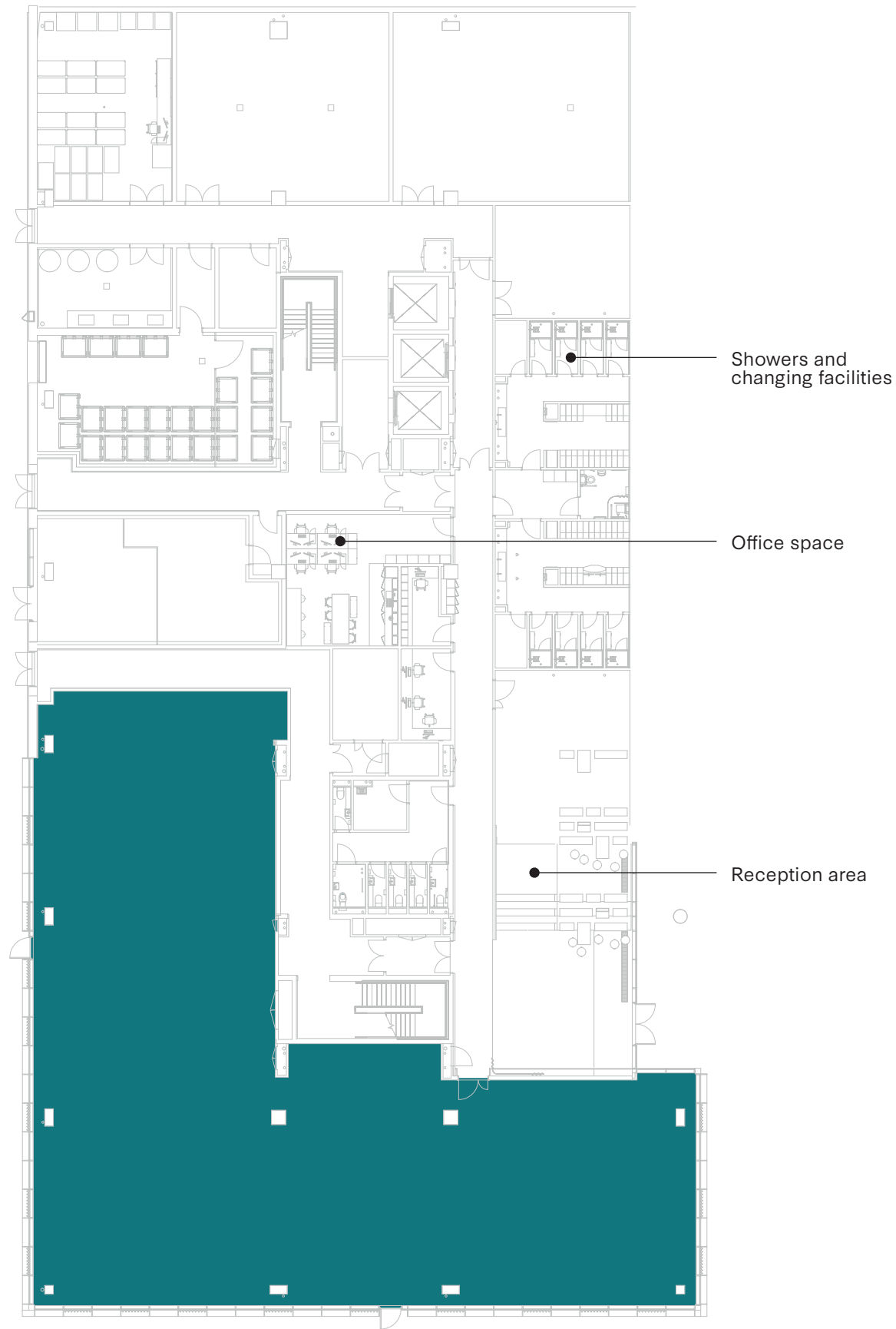


Cafe

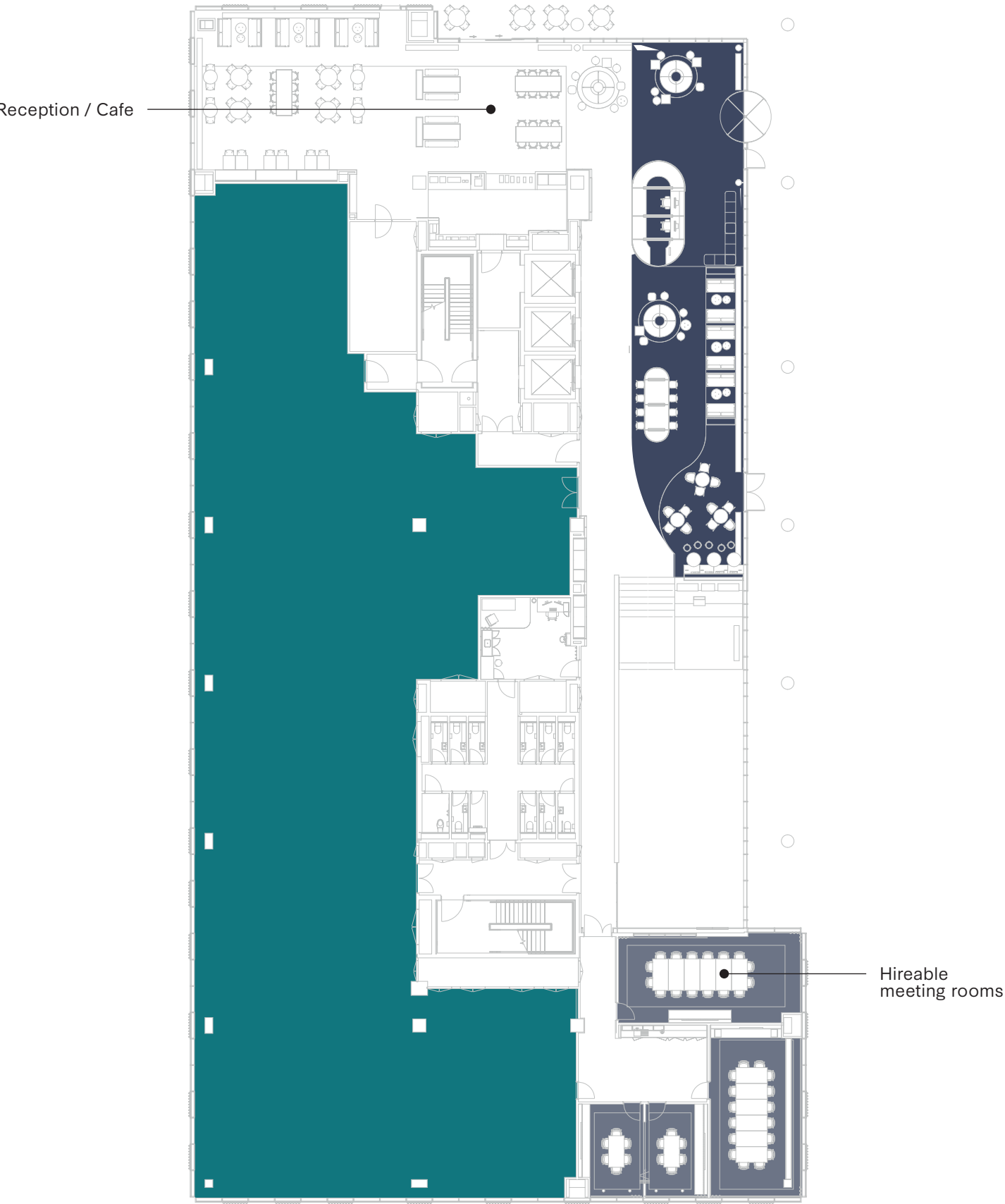


Typical office floor

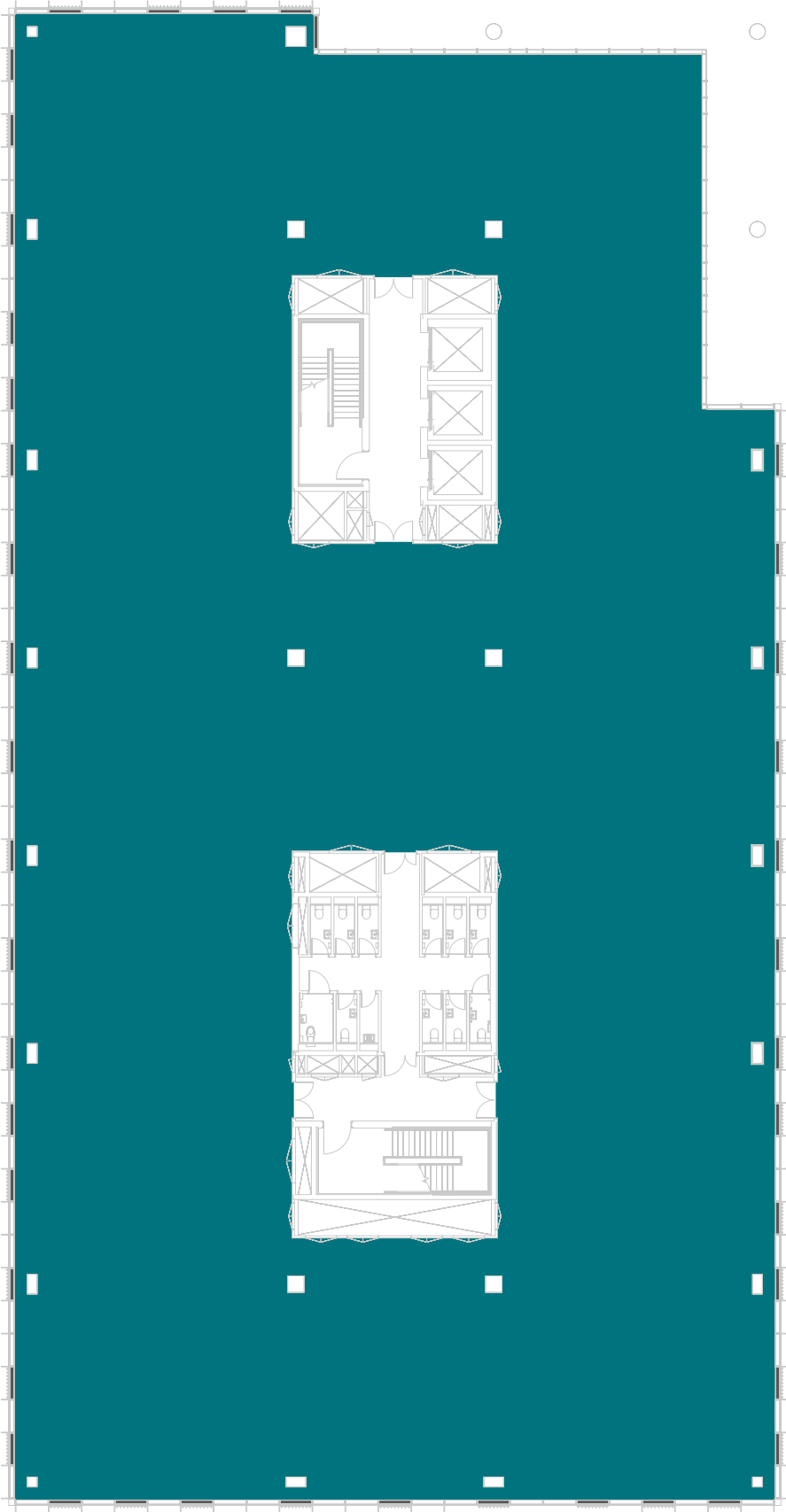
LOWER GROUND FLOOR



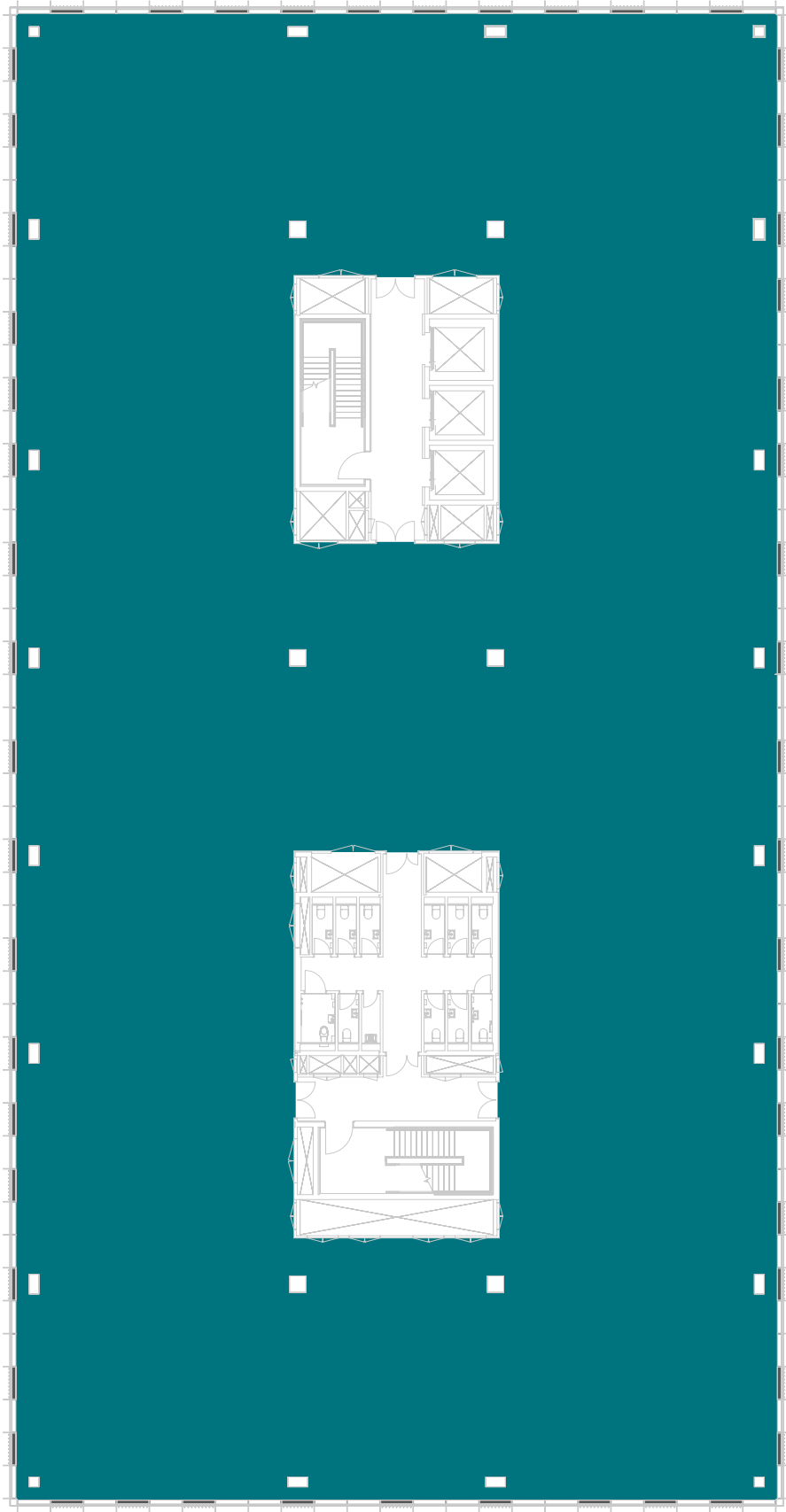
GROUND FLOOR



FIRST FLOOR



SECOND FLOOR



WHO IS **BRUNTWOOD SCITECH?**



AN UNRIVALLED NETWORK








FORMING AND SCALING BUSINESSES



30+ partnerships with Universities and NHS Trusts

MULTIPLE campus locations across the UK

500 companies across the UK campus network

-  Specialist monitoring
-  Access to finance
-  Access to talent
-  Thriving ecosystem
-  Access to over 100 public, private and academic partnerships



OUR CUSTOMERS



COLLABORATION WITH INDUSTRY

Our links to industry leading partners assist with method development, data interpretation and training, and also allows us to deliver exciting innovations.



STRATEGIC SERVICE PROVIDERS



Showcasing the latest in cell and protein analysis technologies, with onsite support from Cytiva, the Cytiva Technology Lab is continually updated to provide researchers with a powerful suite of high-end research tools.



Delivered in partnership with Waters Corporation and fully supported by an experienced team, analytical and preparative scale LCMS instrumentation are available for walk-up sample submission or session based bookings.

INNOVATION SERVICES

ONCOLOGY DEVELOPMENT PROGRAMME

A unique collaboration of global pharmaceutical and healthcare companies, research institutions and public bodies to identify and progress exciting oncology innovations that will improve the diagnostics and treatment of cancer.



Jamie Bottomley
07788 975465



Ben Thacker
07917 218244



Theo Holmes
07967 802656

Michelle Mills
07733 314585

Birmingham Health Innovation Campus,
Aston Webb Boulevard,
Selly Oak,
Birmingham,
B29 6SJ

bruntwood.co.uk/scitech

bruntwood
SciTech